

Mapping The Future



WHILE MAINTAINING THE PRESENT



MAPPING THE FUTURE



MAPPING THE FUTURE

The Minot Park District is proposing a ½ cent sales tax that will provide property tax relief as well provide funding for quality of life projects and maintain our current parks and facilities.



INDOOR FACILITY STUDY



Flexibility and adaptability of spaces
for year-round recreation



Involve the Community to
identify Community needs



Benefit all Minot citizens regardless of
recreation type, age, or abilities



Enhance quality of life
for Minot Citizens

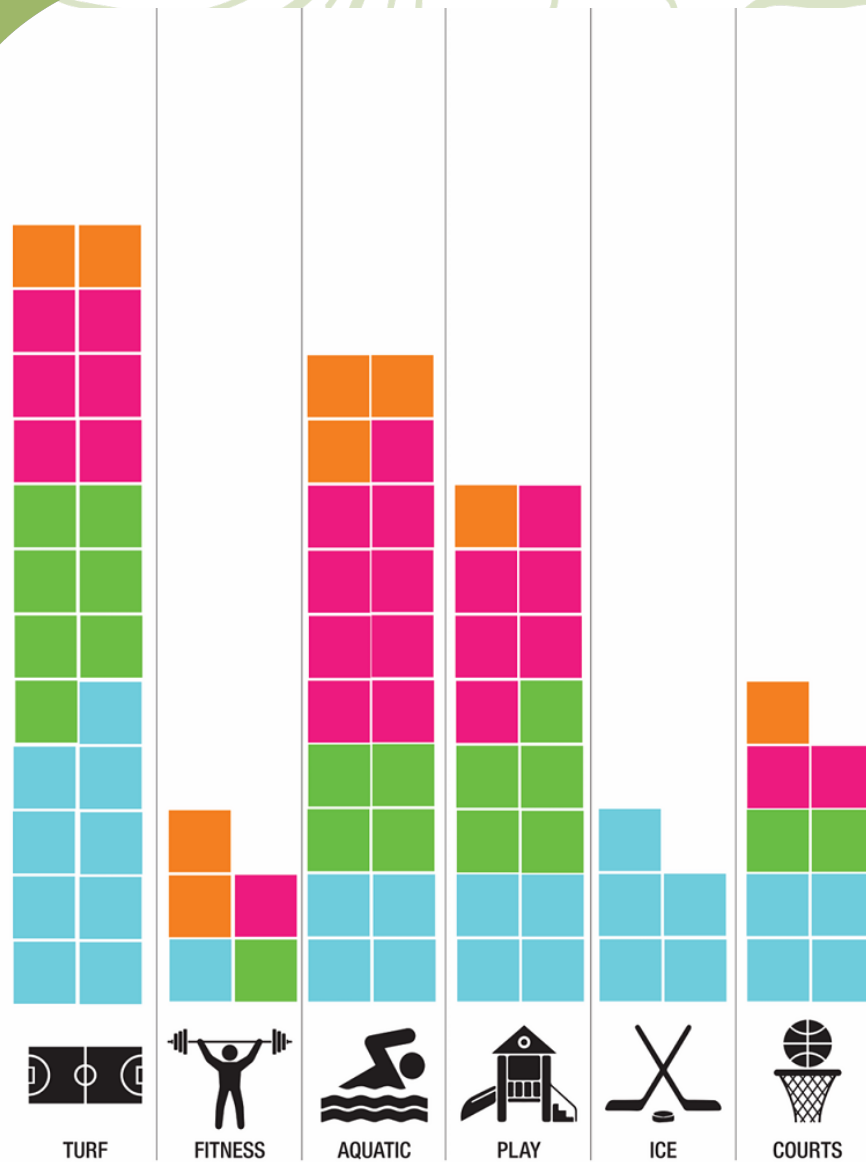


Community
Partnerships



Increase Minot Park District's
economic impact

MAPPING THE FUTURE



FACILITY PRIORITIES
 MINOT PARK DISTRICT FACILITY MASTERPLAN
 JULY 6, 2021 | © 2021 JLG ARCHITECTS



SURVEY RESULTS

1. Turf
2. Aquatics
3. Play
4. Courts
5. Ice

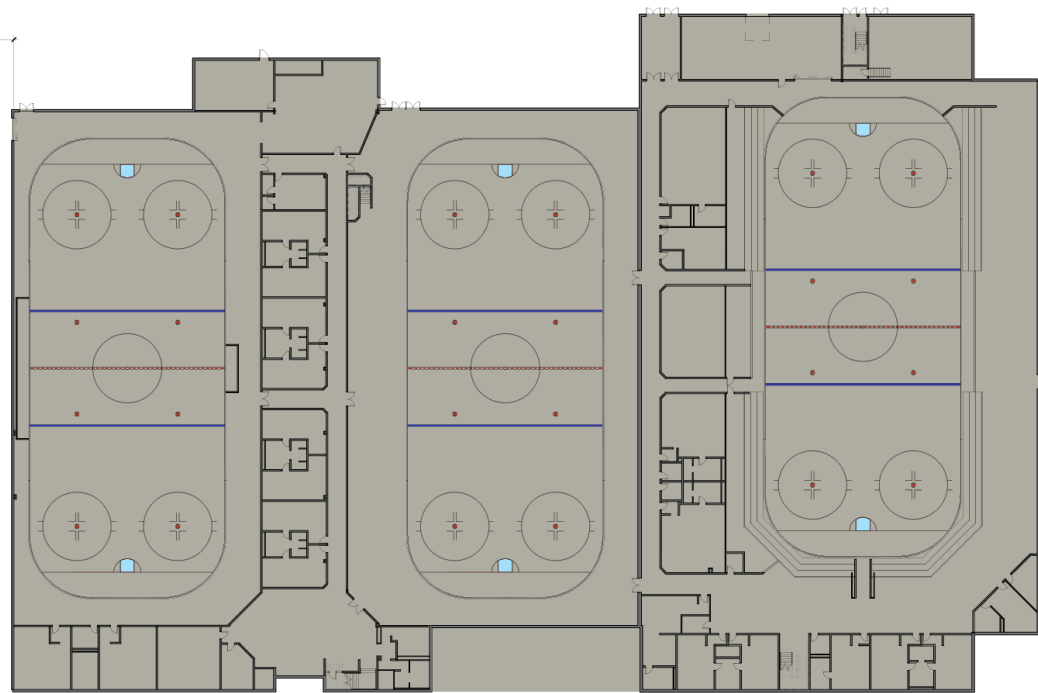
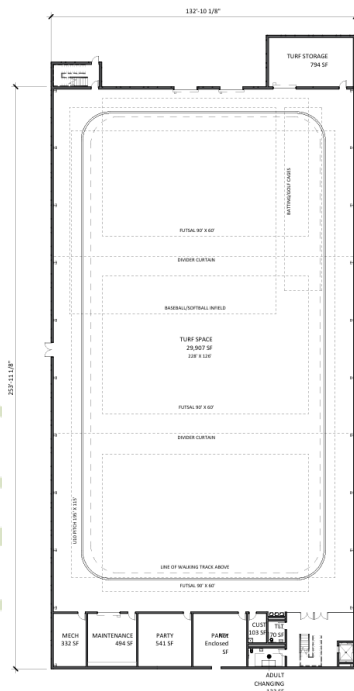


PUBLIC FORUM

- MAYSA providing resources outside of ice sports is positive and makes the building more rounded for year-round use.
- The proposed concourse on the south side of the facility is important for connecting the building but may be considered as one of the later phases.
- Indoor play is critical to the facility's usage.



MAPPING THE FUTURE



MAPPING THE FUTURE



MAPPING THE FUTURE



MAPPING THE FUTURE



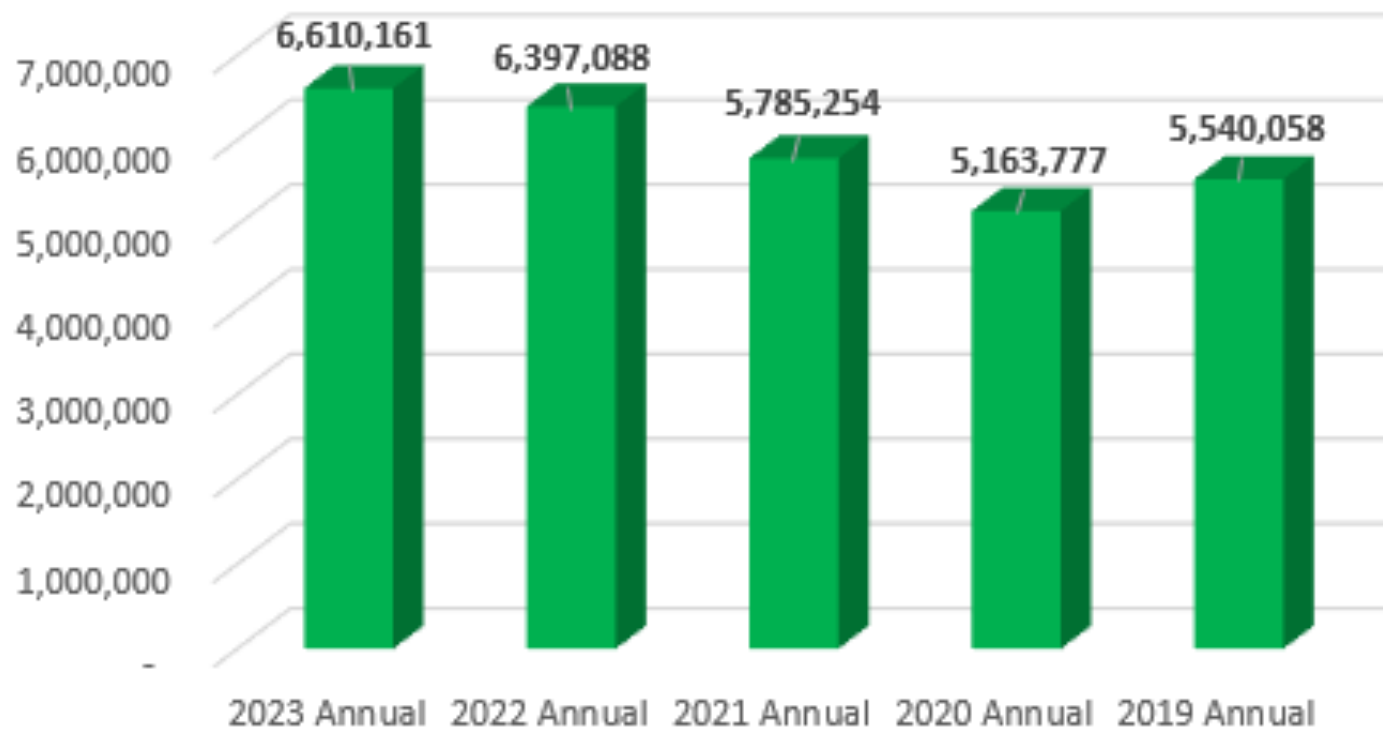
MAYSA
FIELDHOUSE





SALES TAX COLLECTION

1/2 Cent Collection





BREAK DOWN OF ½ CENT SALES TAX

- Property Tax Relief
 - 38 - 26 Mills from Minot Parks
 - 2025=3.5 Million
 - 40% Reduction General Fund
 - Savings of \$170.00 on \$250,000.00 Home

- Operational Costs
 - Baseball Fields
 - Softball Fields
 - MAYSA
 - Roosevelt Park Zoo
 - Auditorium
 - Optimist Soccer Complex

- Bond Payment Turf Facility



MAINTENANCE OF CURRENT FACILITIES

- Auditorium Roof
- MAYSA Roof
- Roosevelt Park Pool
- Scheels Complex Grading
- Optimist Soccer Complex Drainage





FUTURE PROJECTS

Corbett Field Masterplan

- Accessibility
- Restrooms

Superfund Site

- 18 Disc Golf Course
- Crossing Country Running Track
- Mountain Bike Trails

Auditorium Renovation/Expansion

- Three Multi-use Courts
- Pickleball Courts

Phase Three Outdoor Recreation

- Poured in Place Inclusive Playground
- Zip Line
- Community Orchard
- Challenge Course
- All Season Pavilion

Field Analysis

- Potential Tournament Growth
- Economic Impact

MAYSA Addition

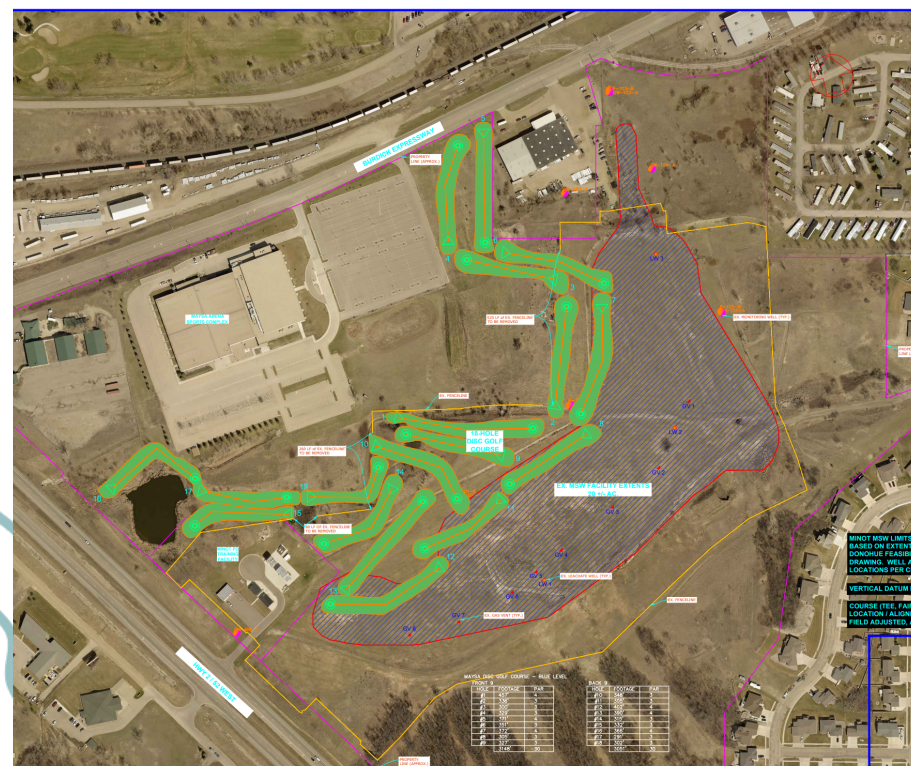
MAPPING THE FUTURE

FUTURE PROJECTS

CORBETT FIELD



SUPERFUND SITE



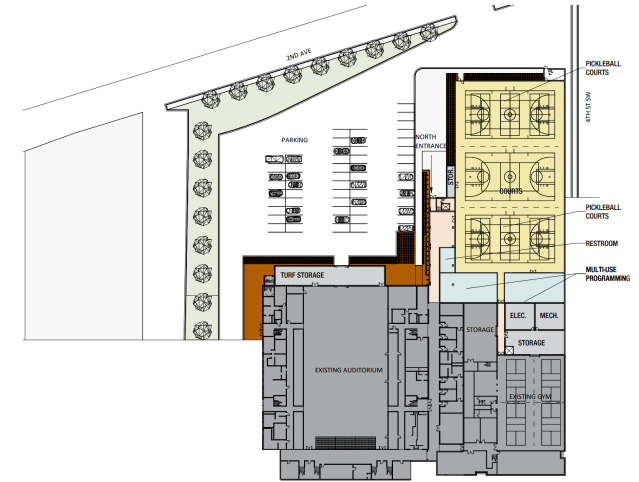


FUTURE PROJECTS

OUTDOOR RECREATION PHASE THREE



AUDITORIUM



MINOT PARK DISTRICT INDOOR REC. FACILITIES

Ground Floor

12/9/21 | JLG 21037 | © 2022 JLG ARCHITECTS





FUTURE PROJECTS

MAYSA ADDITION



FIELD ANALYSIS

